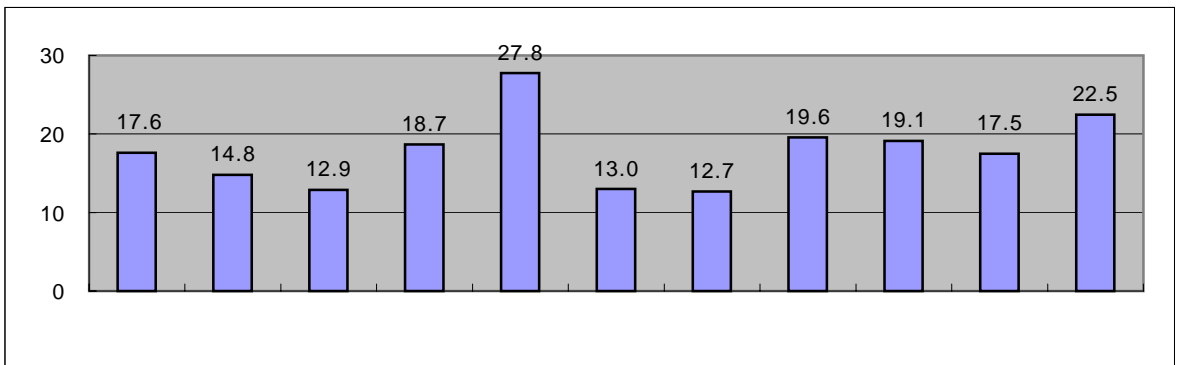
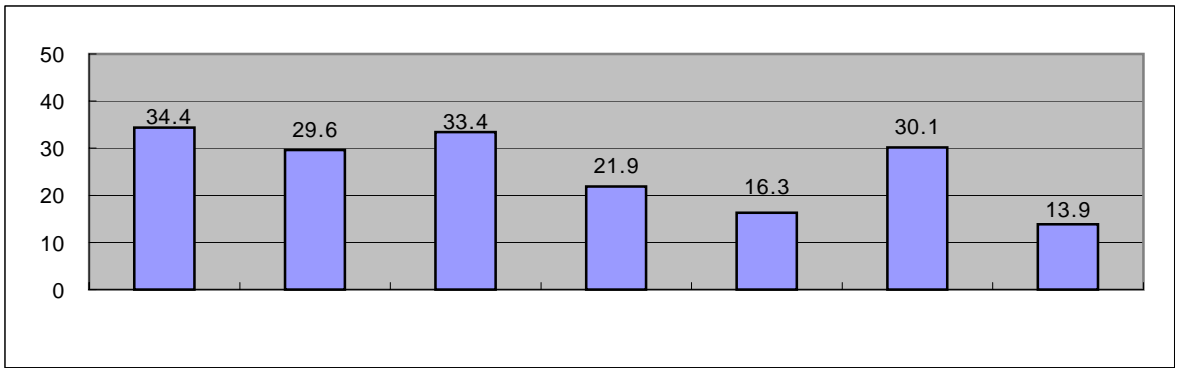
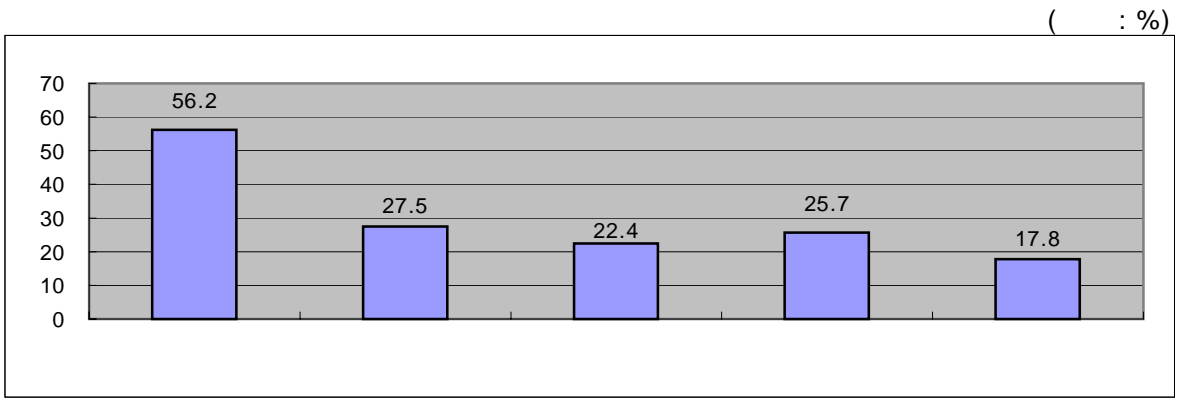
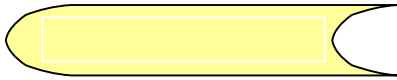


3.

:





(2005) (:)

	56.2	67,886,395	29,831,165	8,349,755
	27.5	4,081,640	709,953	412,505
	22.4	1,802,790	308,700	95,897
	22.6	3,285,055	401,253	340,467
	34.4	346,569	72,778	46,466
	29.6	328,210	71,160	26,055
	33.4	300,975	67,102	33,437
	21.9	183,382	25,824	14,295
	16.3	210,727	11,411	23,006
	30.1	134,321	23,758	16,738
	13.9	233,380	16,636	15,724
	17.6	160,724	15,118	13,157
	14.8	131,552	10,294	9,190
	12.9	140,386	9,019	9,045
	18.7	147,655	15,440	12,103
	27.8	168,425	21,807	24,951
	13.0	162,423	9,578	11,538
	12.7	122,426	4,734	10,787
	19.6	109,446	4,765	16,667
	19.1	138,765	5,951	20,582
	17.5	142,436	8,773	16,139
	22.5	123,253	7,105	20,587

$$= (\quad + \quad) / \quad * 100(\%)$$